



# The Riverfront Plan

Conshohocken Borough Council  
Wednesday, March 2, 2016



# Whitemarsh Township Conshohocken Borough

Carter van Dyke Associates  
Campbell Thomas & Co.  
4ward Planning

# The Riverfront Plan

Study of the Schuylkill River waterfront land use and access potential.

Grant Funding:

Transportation and Community Development Initiative (TCDI) grant through the Delaware Valley Regional Planning Commission

Timeframe:

June 2015 – June 2016

# Steering Committee

David Bertram	Conshohocken Borough Planning Commission
Tom Blomstrom	Whitemarsh Township, Director of Parks and Recreation
Karen Cilurso	DVRPC, Manager, Community Revitalization
Scott France	Montgomery County Planning Commission
Rick Mellor	Whitemarsh Township, Manager
Rich Manfredi	Conshohocken Borough, Manager
Karen Tutino	Conshohocken Borough, Borough Council
Suzanne Ryan	PECO Exelon Corporation
Fran Hanney	PA Department of Transportation

# Important Contacts

## *Whitemarsh Township*

Charlie Guttenplan  
Director of Planning & Zoning  
Whitemarsh Township

## *Carter van Dyke Associates*

Kent Baird  
Community Planner

# Scope of Work

- Coordinate with a Steering Committee
- Review and assess the existing conditions
- Strategize land uses issues
- Strategize trail solutions
- Improve the Riverfront Open Space Plan & Riverfront Development Overlay District
- Create an action plan

# So Far

- Steering Committee set Goals, created Study Area and selected stakeholders
- We analyzed existing plans and conditions, interviewed stakeholders and prepared mapping and draft recommendations
- Share feedback

# Study Area





# Goals of the Plan

## **Goal 1:**

Improve Access to the Riverfront

## **Goal 2:**

Connect Our Trails

## **Goal 3:**

Make Our Riverfront a Destination

# Recently Added Goals

## **Goal 4:**

Meet Recreation & Open Space Needs

## **Goal 5:**

Provide for Economic Development

## **Goal 6:**

Incorporate Sustainable Development

# Goal 1: Improve Access to the Riverfront

## *Land Use Recommendations*

- Objective 1:** Establish the Plymouth Falls Boat Launch
- Objective 2:** Extend Oak Street Across Rail Line
- Objective 3:** Establish Oak Street River Link
- Objective 4:** Establish Conshohocken Train Station River Link
- Objective 5:** Create the Two Boroughs Pedestrian Bridge
- Objective 6:** Establish Bridge Sheltered Play Area and Tot Lot
- Objective 7:** Extend Washington Street to Lee Street

# Goal 1: Improve Access to the Riverfront

## *Design Standards Recommendations*

**Objective 8:** Introduce Streetscape Enhancements along Oak Street

**Objective 9:** Introduce Streetscape Enhancements along Harry Street

**Objective 10:** Introduce Streetscape Enhancements along Washington Street

## Goal 2: Connect Our Trails

### *Land Use Recommendations*

- Objective 1:** Establish the Riverfront Park and Walking Path
- Objective 2:** Establish the Lee Street Loop
- Objective 3:** Install Primary and Secondary Trailheads
- Objective 4:** Design and Install The Boardwalk at Spring Mill Park

## Goal 2: Connect Our Trails

### *Design Standards Recommendations*

**Objective 5:** Improve safety features:  
street crossings, lighting and  
emergency

**Objective 6:** Improve trailside landscaping

# Goal 3: Make Our Riverfront a Destination

## *Land Use Recommendations*

- Objective 1:** Establish Canal History Center and Park
- Objective 2:** Establish Oak Street Soccer & Tennis
- Objective 3:** Create Two Boroughs Bridge
- Objective 4:** Create Ash Street Elevated Plaza
- Objective 5:** Install Ash Street Cantilevered Overlook
- Objective 6:** Create Millennium Meadow
- Objective 7:** Install Poplar Street Riverfront Banners
- Objective 8:** Install Boathouse Suspended Boardwalk

# Goal 3: Make Our Riverfront a Destination

**Objective 9:** Install Monument to Industry

**Objective 10:** Create Schuylkill River Allée

**Objective 11:** Establish Washington Street Soccer Field

**Objective 12:** Install Band Shell

**Objective 13:** Install Suspended Walking Path at Boathouse

**Objective 14:** Install Suspended Walking Path to Spring Mill Station

**Objective 15:** Install The Cyclone Bridge with Turbines



# Goal 3: Make Our Riverfront a Destination

## *Design Standards Recommendations*

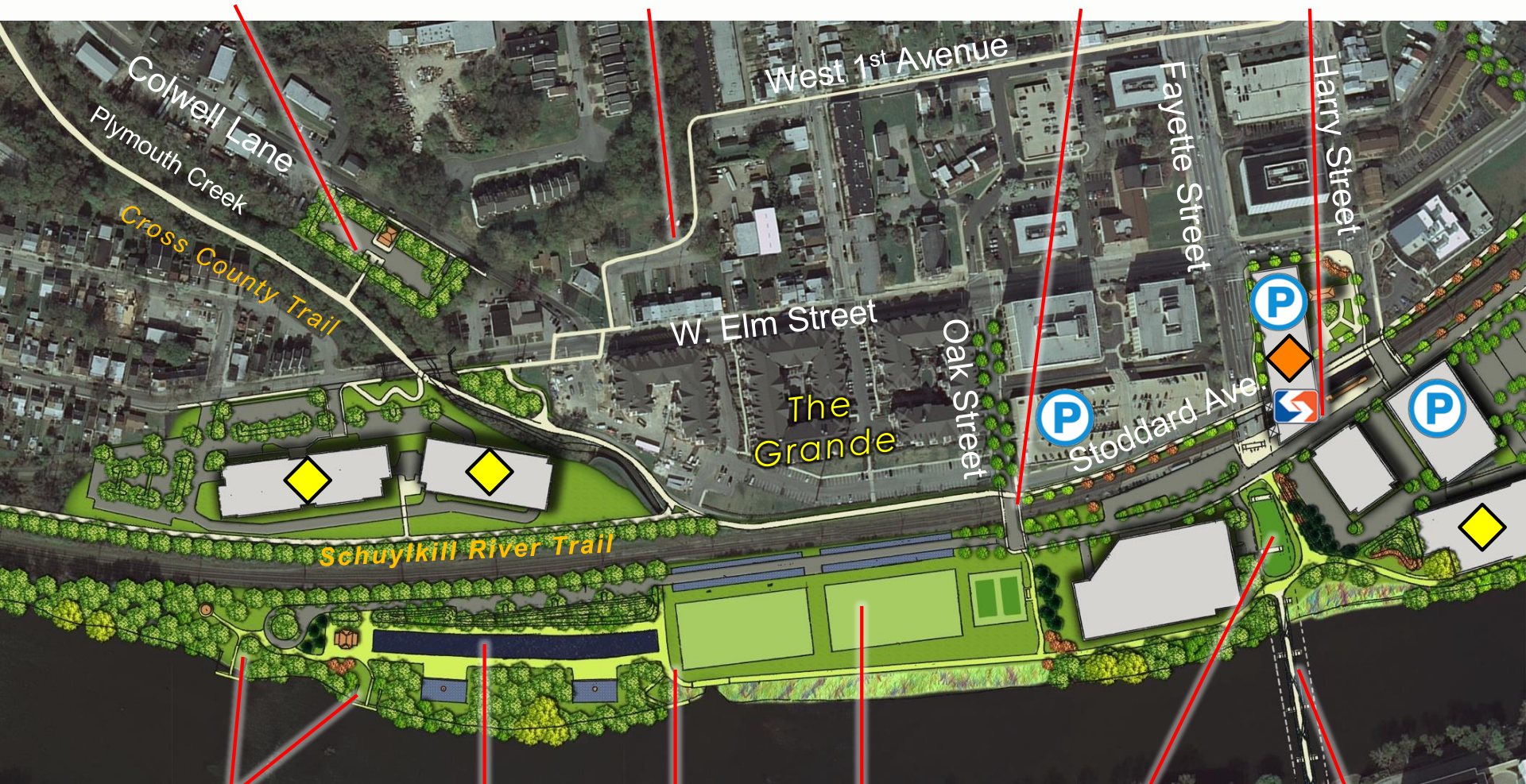
- Objective 16:** Introduce streetscape enhancements along Washington Street
- Objective 17:** Install directional signage and emergency information
- Objective 18:** Establish seasonal lighting package for pedestrian bridges
- Objective 19:** Establish a Business Improvement District
- Objective 20:** Establish a Transit Revitalization Investment District
- Objective 21:** Establish Modified Riverfront Overlay District

**Plymouth Creek  
Trailhead**

**Lee Street Loop  
(1<sup>st</sup> Ave. Section)**

**Oak Street  
Extension**

**New SEPTA  
Station**



**Plymouth Falls  
Boat Launch**

**Plymouth  
Canal**

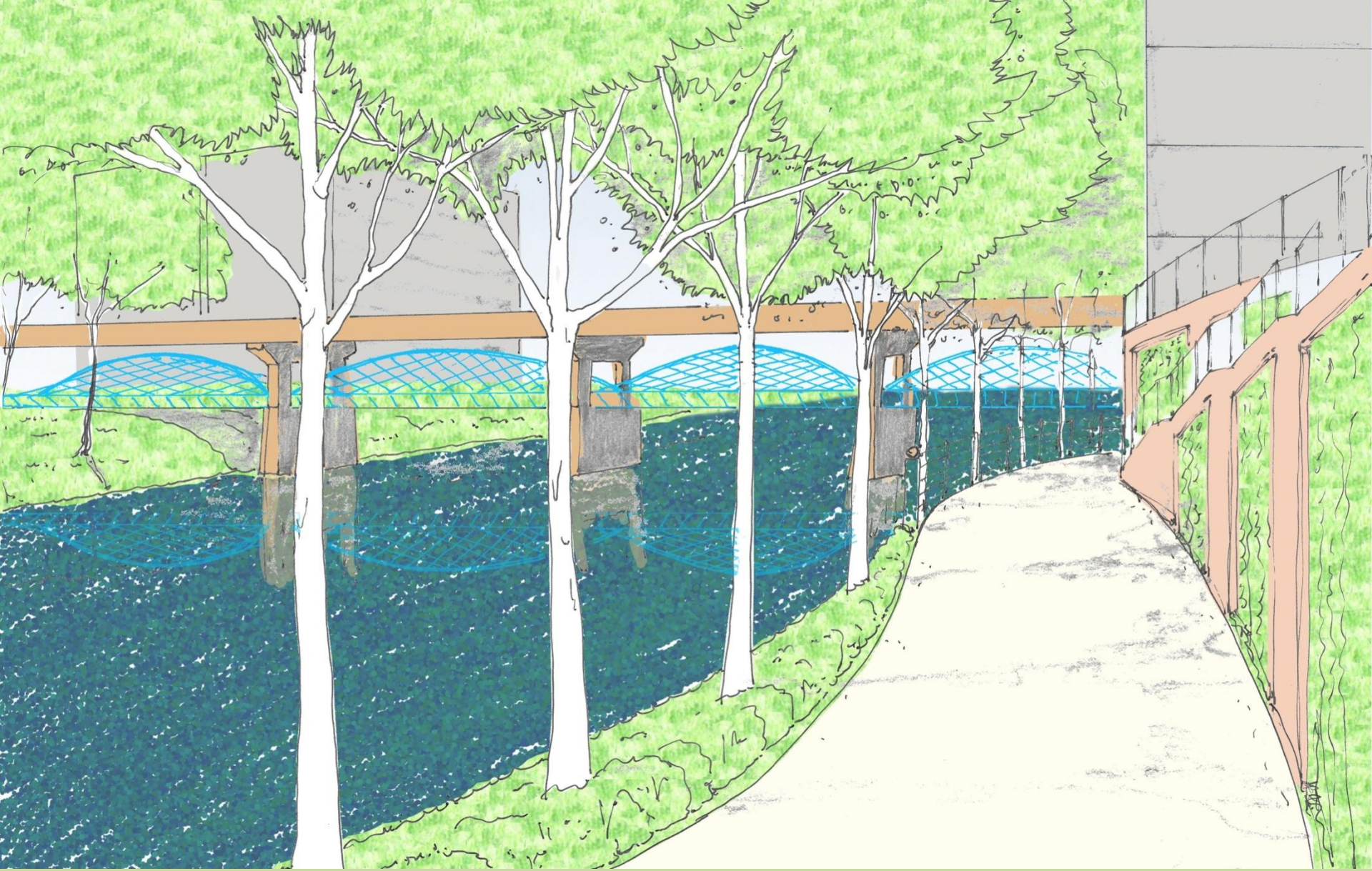
**Fishing  
Pier**

**Oak Street  
Athletic  
Fields**

**Under-bridge  
Play Area &  
Tot Lot**

**Two  
Boroughs  
Bridge**





## View of Two Boroughs Pedestrian Bridge

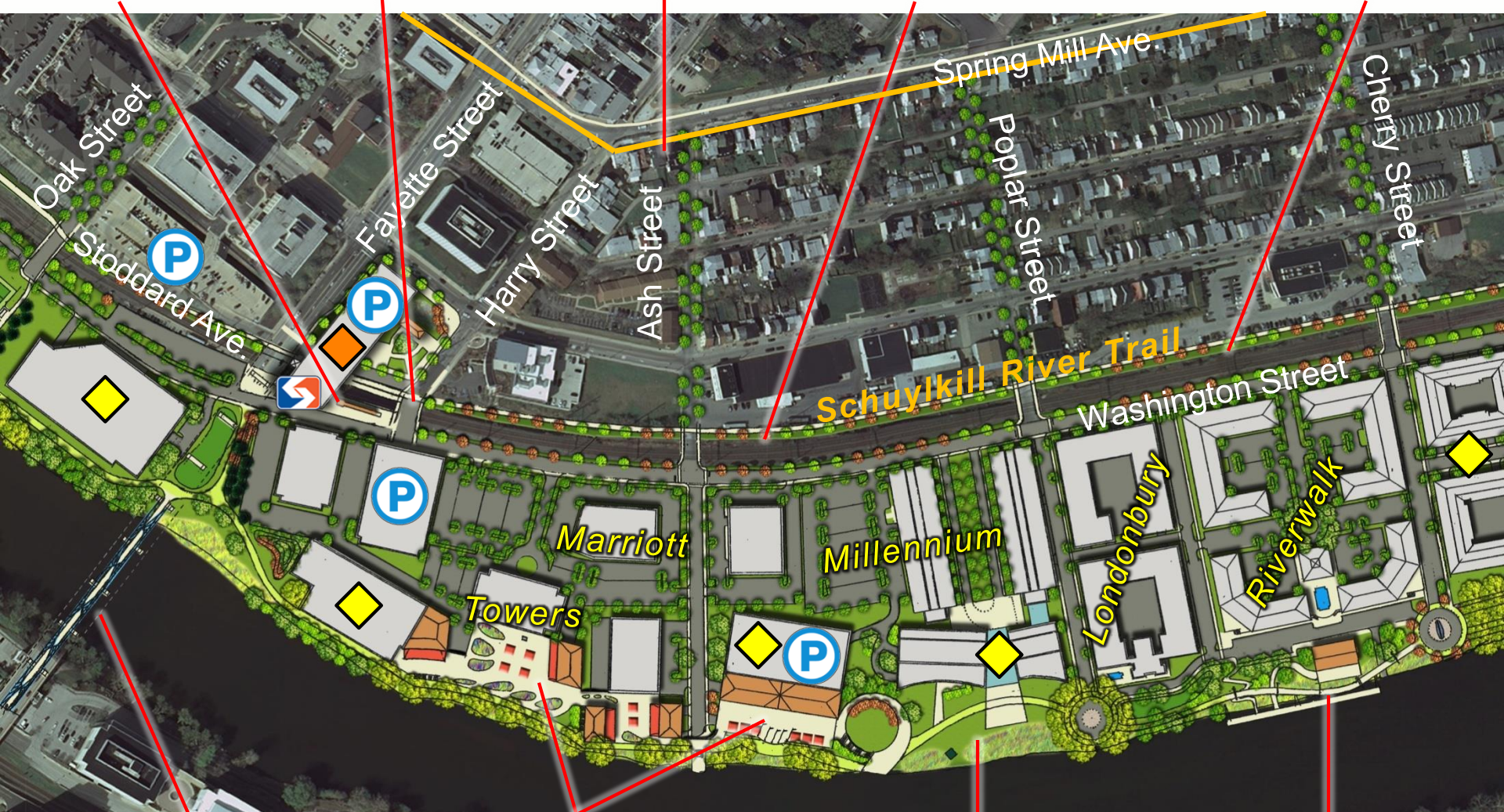
SEPTA

Harry St. Improvements

Lee Street Loop

Schuylkill River Trail Improvements

Elm St. Square



Two Boroughs Bridge

Ash Street Plaza

Millennium Meadow

Conshohocken Boathouse



*The Riverfront Plan*

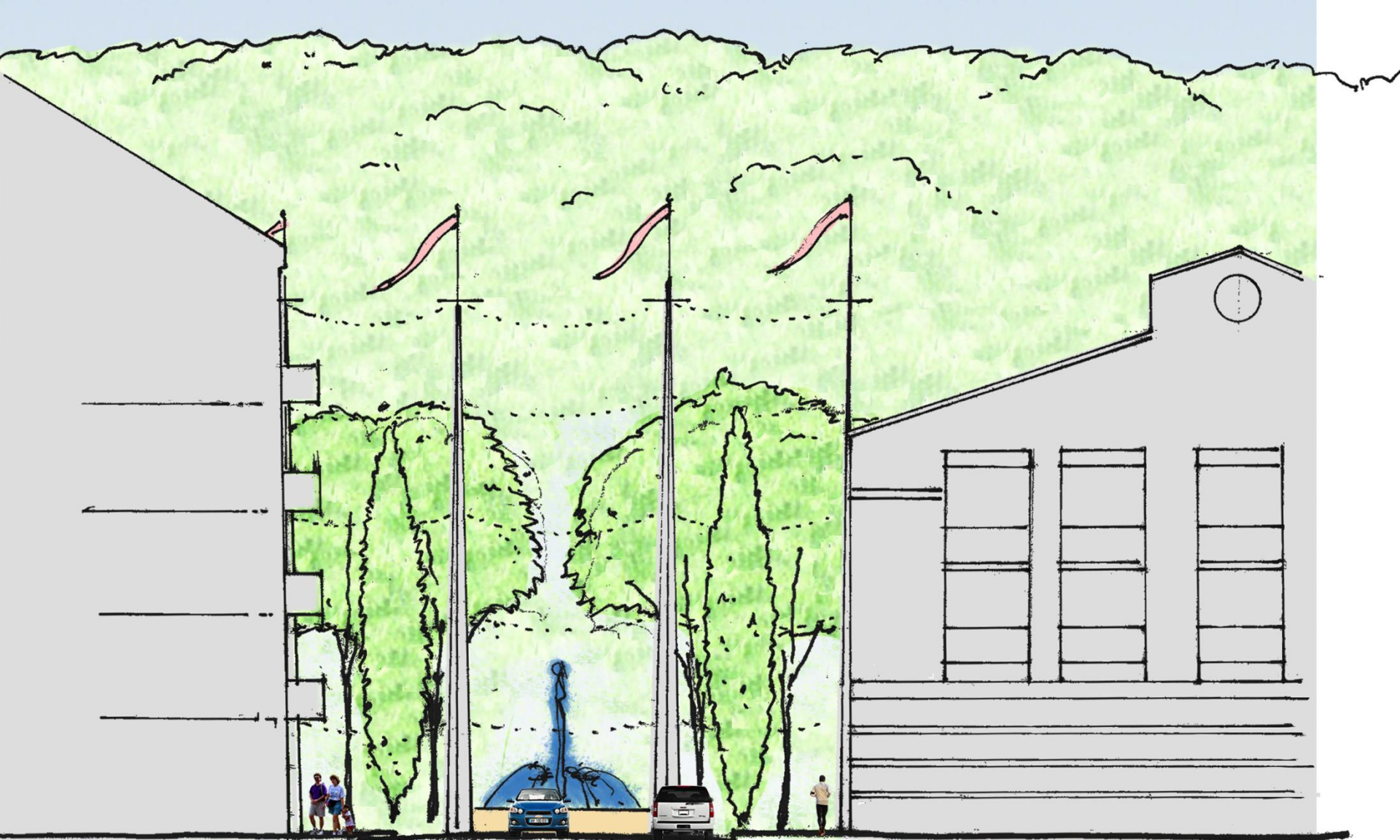




# Ash Street Elevated Plaza & Esplanade





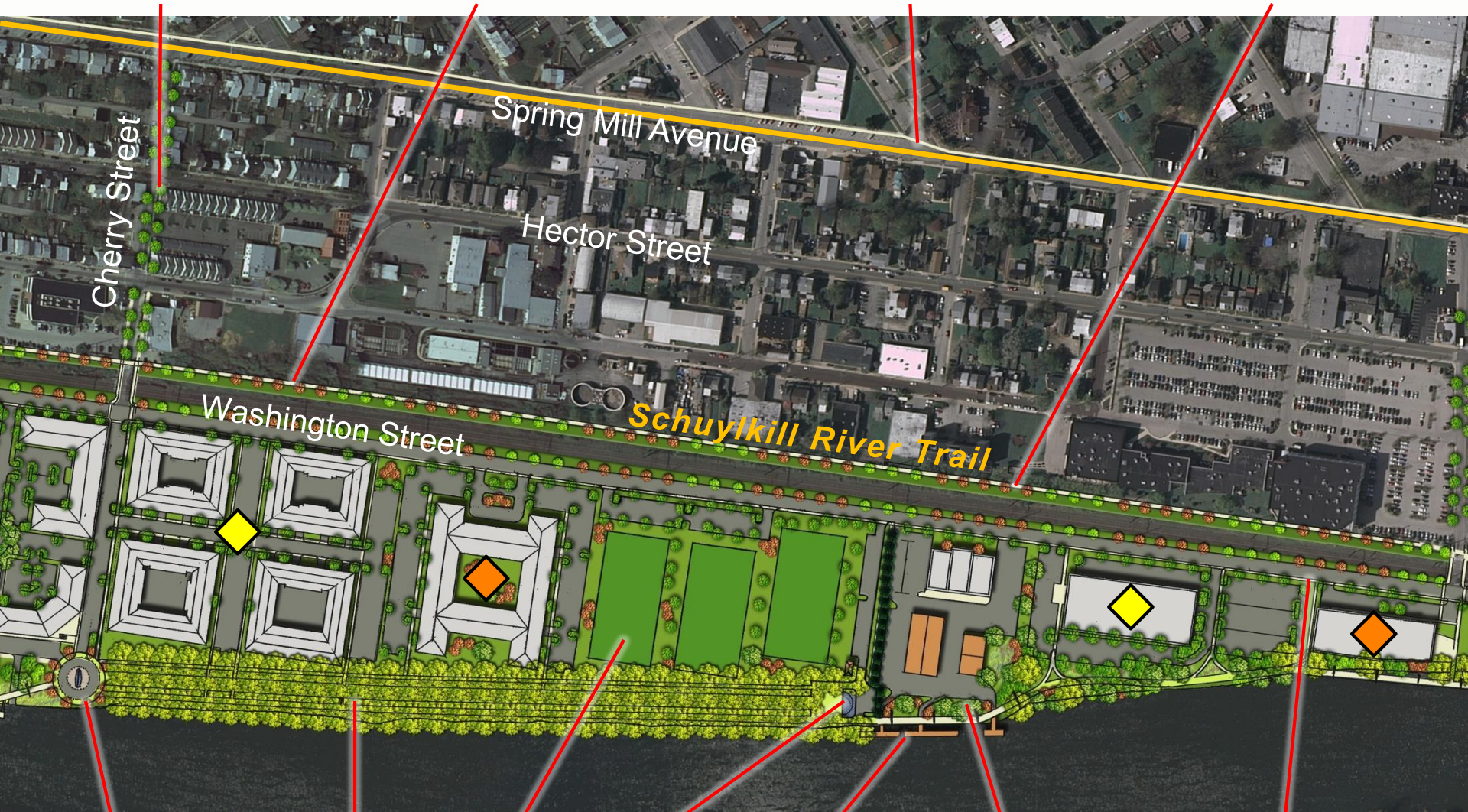


# Poplar Street Plaza

**Cherry Street  
Improvements**

**Schuylkill River Trail  
Improvements**

**Lee Street Loop  
(Spring Mill Ave. Section) Quaker Quick Trail**



**Monument  
to Industry**

**Riverfront  
Allée**

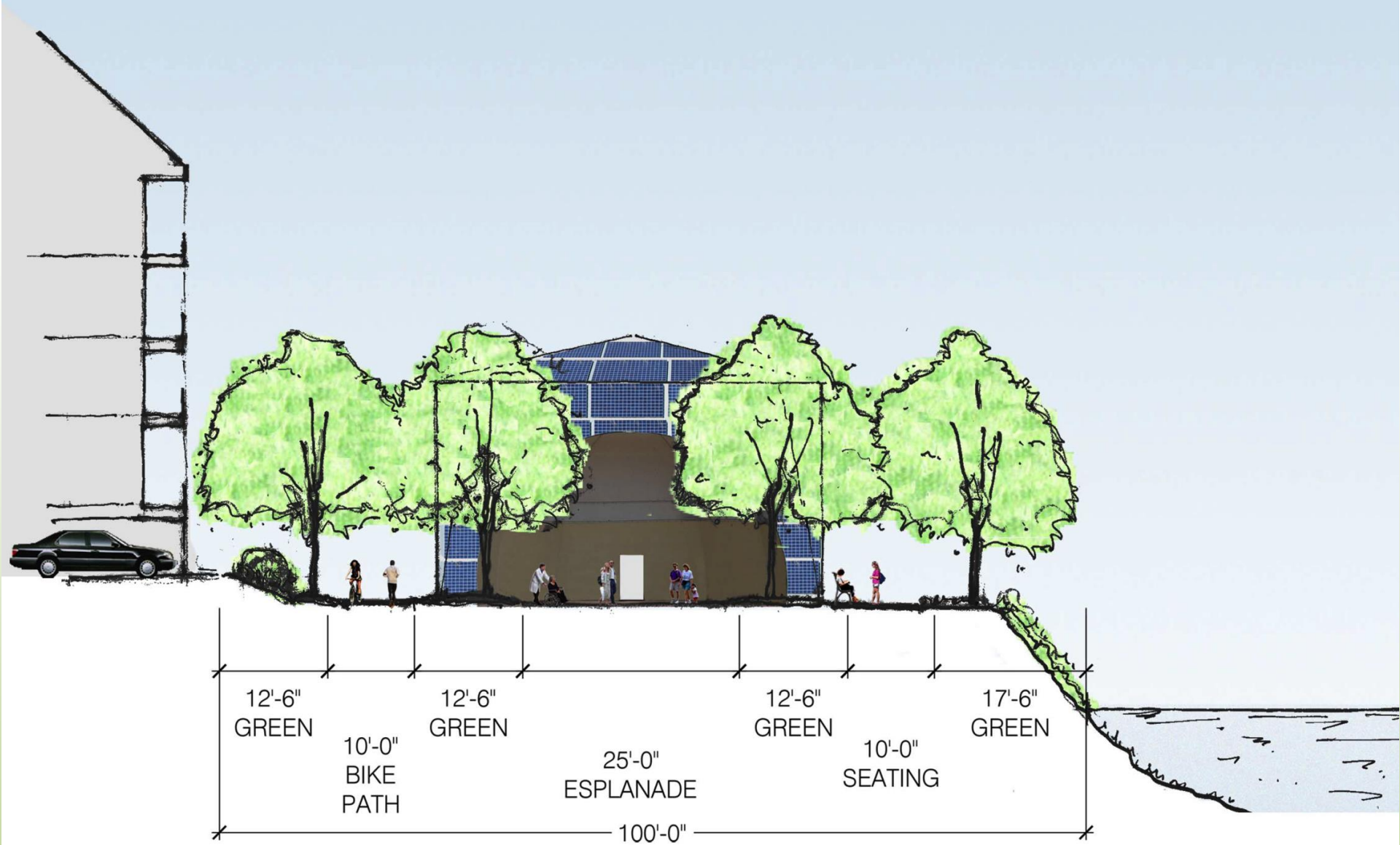
**Athletic  
Fields**

**Band  
Shell**

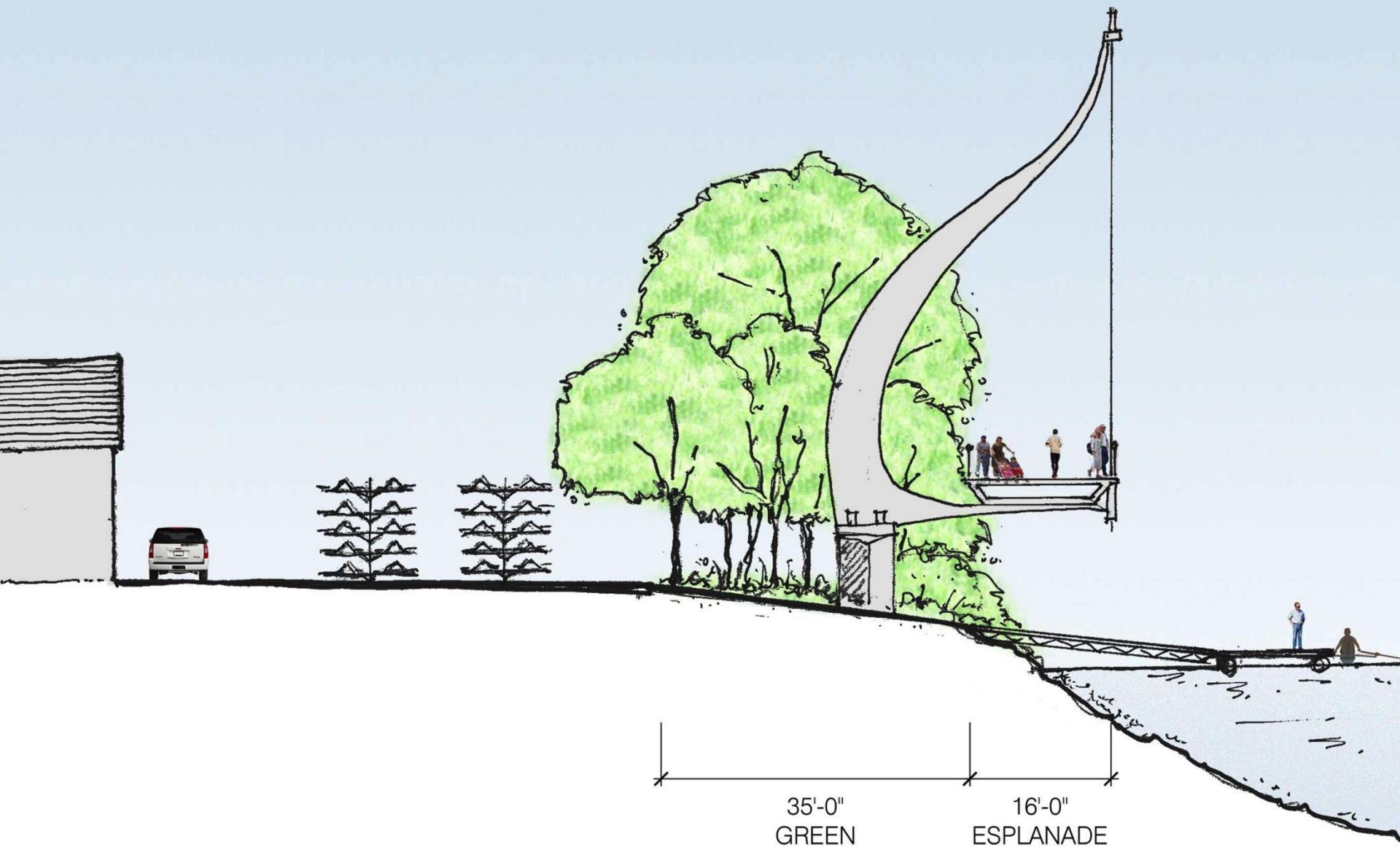
**The  
Launch**

**Esplanade  
over Boat  
Docks**

**Washington St  
Improvements**



## Riverfront Allée with Band Shell



# Elevated Esplanade at the Rowing Center



### **Lee Street Loop (Lee St. Section)**

*Pedestrian Trail,  
Signage to Conshohocken*

### **Schuylkill River Trail Improvements**

*Landscape Beautification,  
Street Crossing, Signage*

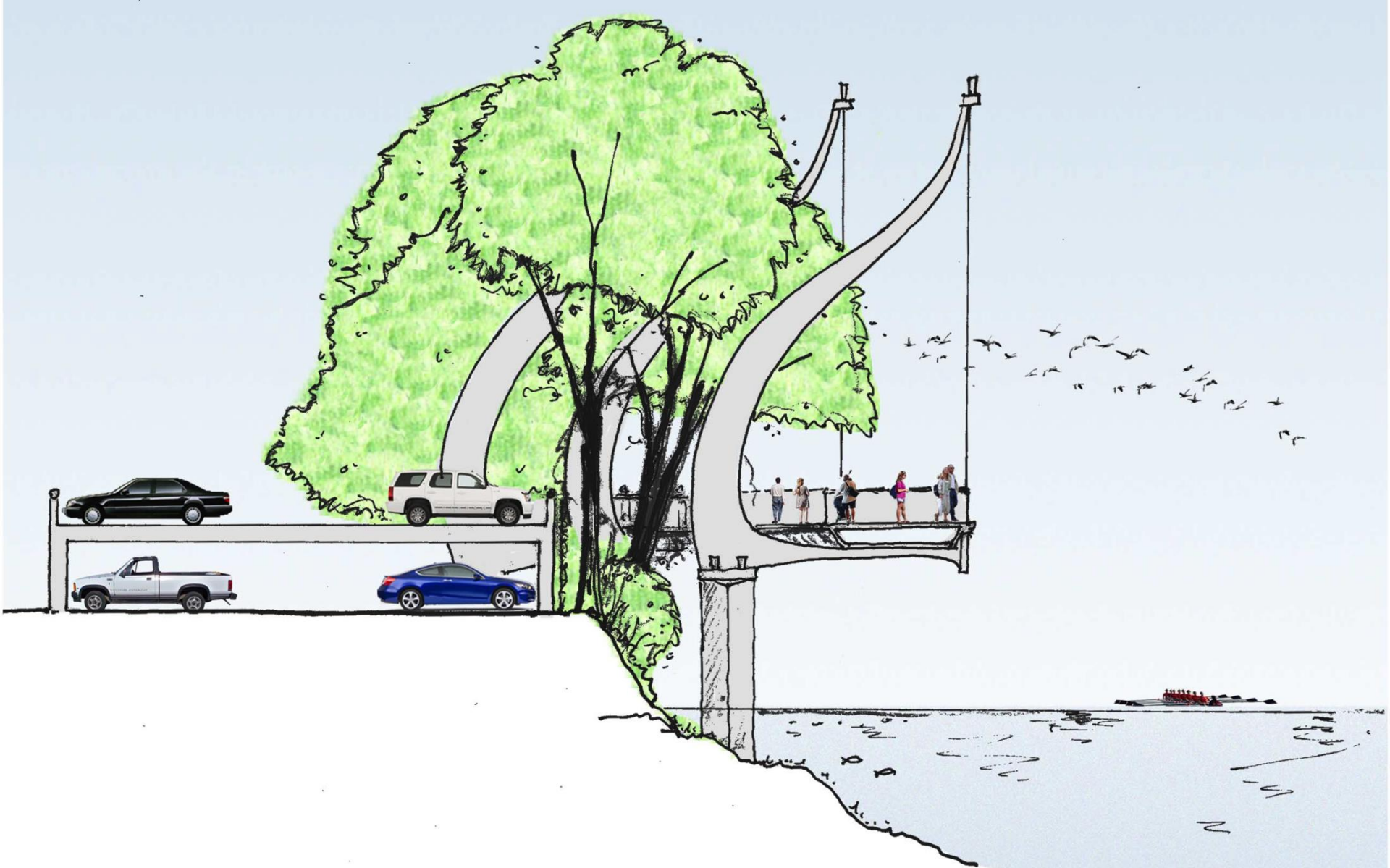
### **Suspended Walking Path**

*Cantilevered-contemporary design, Steel  
& Cable Construction, Lighting*

### **Washington Street Extension**

*Streetscape Beautification, Extension  
Two Lane, Signage , Sidewalks, RE-  
Development of Existing Structures*





## Elevated Esplanade at Spring Mill



## PECO Park and Walk

*Trailhead Parking, Street Crossing,  
Signage*

## The Boardwalk at Spring Mill Park

*ADA Accessible Boardwalk,  
Overlook Station,  
Habitat Signage*

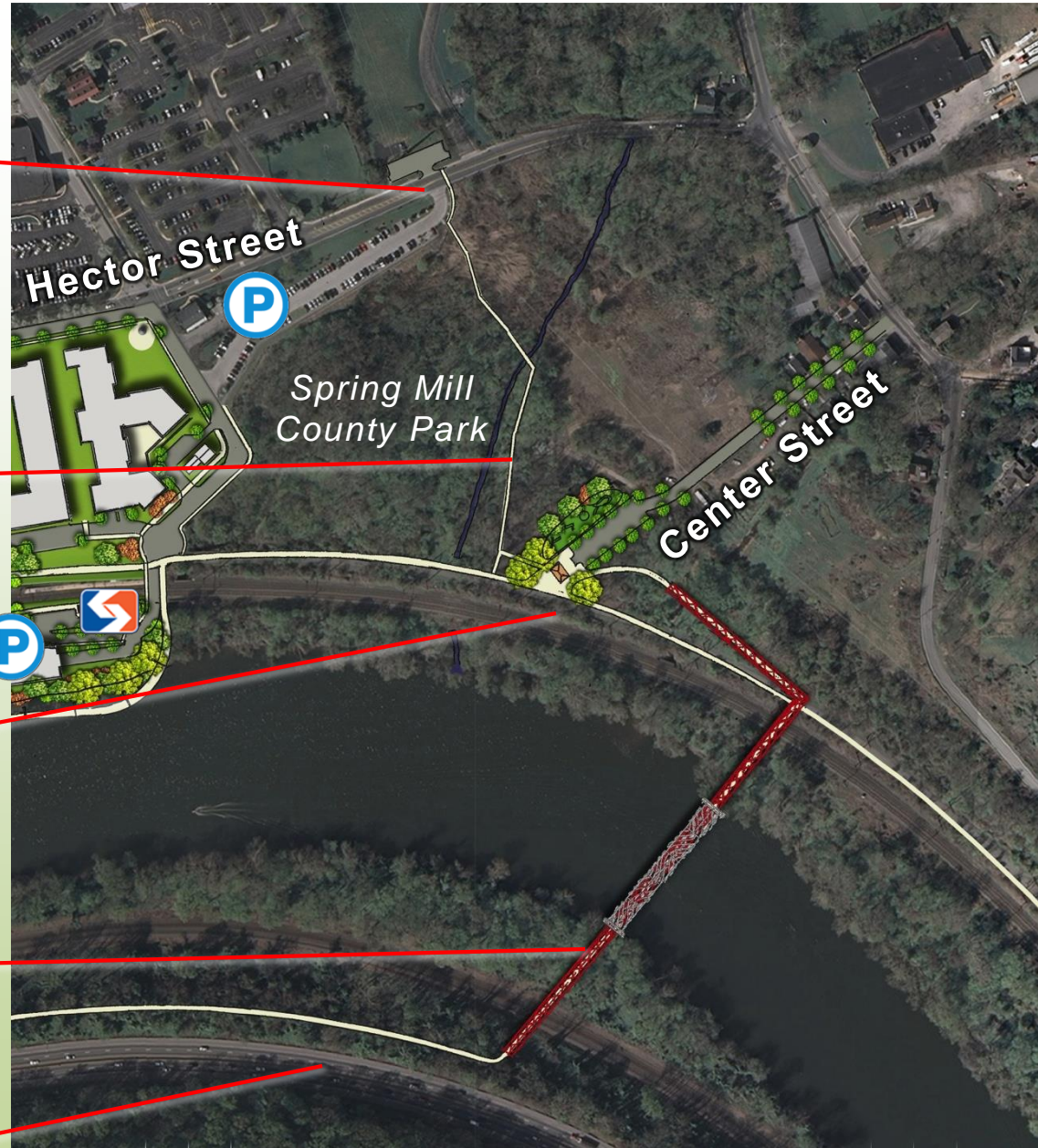
## The Trailhead at Spring Mill

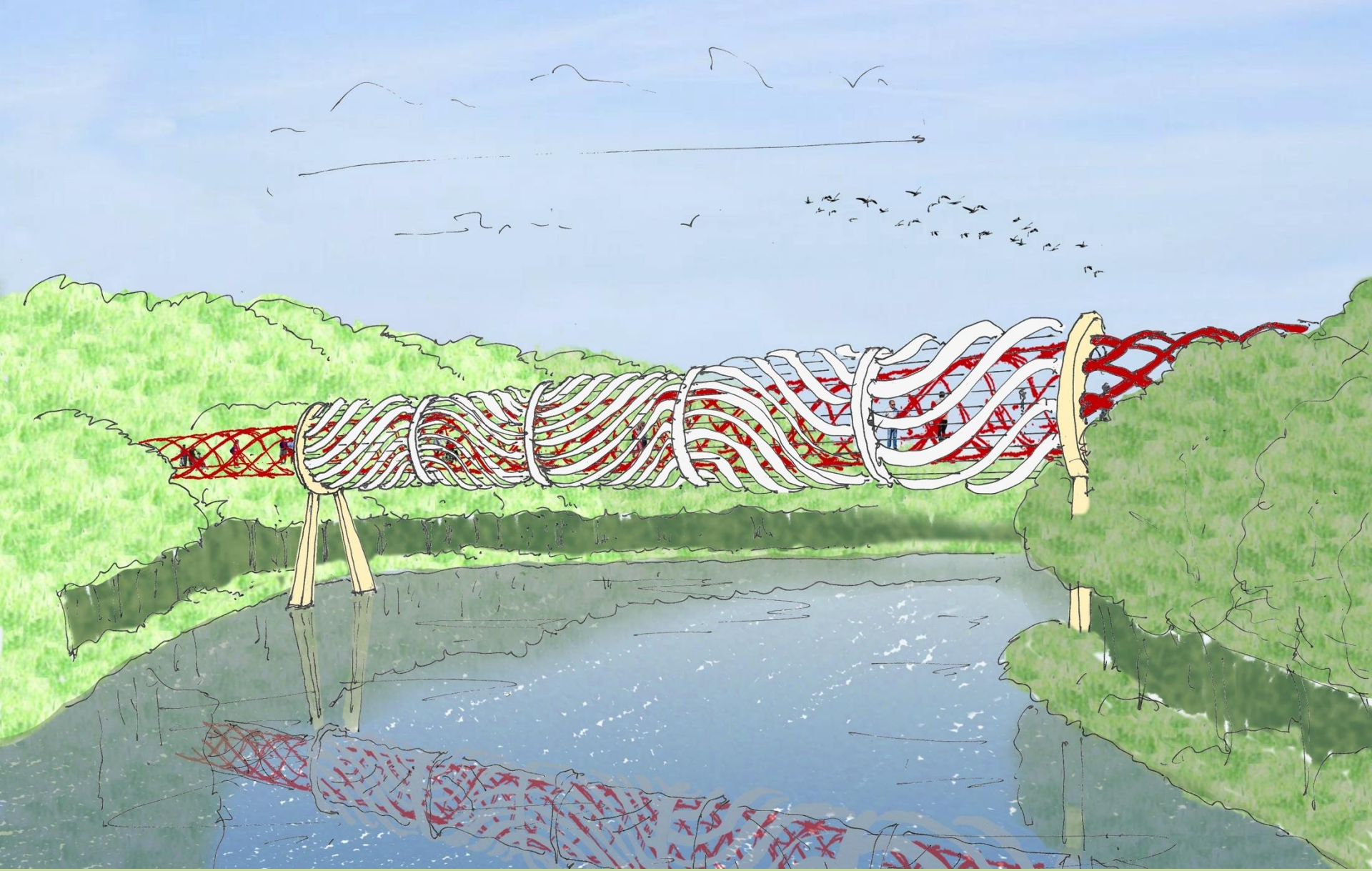
*Parking, Play Area and Tot Lot,  
Restrooms, Maps, Schuylkill River  
Heritage Area Information*

## The Cyclone Bridge

*Full River Span Pedestrian Bridge,  
Cyclonic Energy Production,  
Trailhead Ramp, Elevated Trail & Rail  
Crossings, Signage*

## Southside Schuylkill Trail





# Pedestrian Bridge Concept

# Possible Implementation Tools

- Business Improvement District
- Transit Revitalization Investment District
- Modified Riverfront Overlay District

# Next Steps

Share Feedback

Action Plan

Final Draft of Plan

# Thank You

