

# Beacon

Commercial Real Estate, LLC

## AVAILABLE FOR LEASE



## 375 E. ELM STREET • CONSHOHOCKEN, PA 19428 *Best Value in Conshohocken!*

- 31,600 SF, Two-Story Class “A” Office Building
- 5,655 Rentable SF available on 2nd floor
- Parking Ratio: 4.2 spaces per 1,000 SF
- Rental Rate: \$26.50 + Utilities
- Monument Signage
- Excellent Conshohocken Location
- Walkable to both Conshohocken and Spring Mill Train Station
- Walkable into town with multiple amenities, across the street from Cerdo’s and Peppercini’s restaurants

### *For Information, Contact:*

**GENE MCHALE**  
[gmchale@beaconcre.com](mailto:gmchale@beaconcre.com)

**COLIN MCHALE**  
[cmchale@beaconcre.com](mailto:cmchale@beaconcre.com)

**610.828.0100**

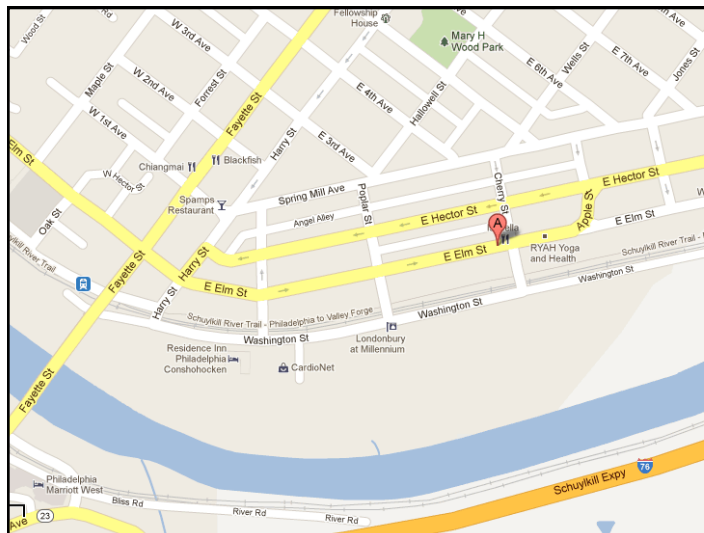
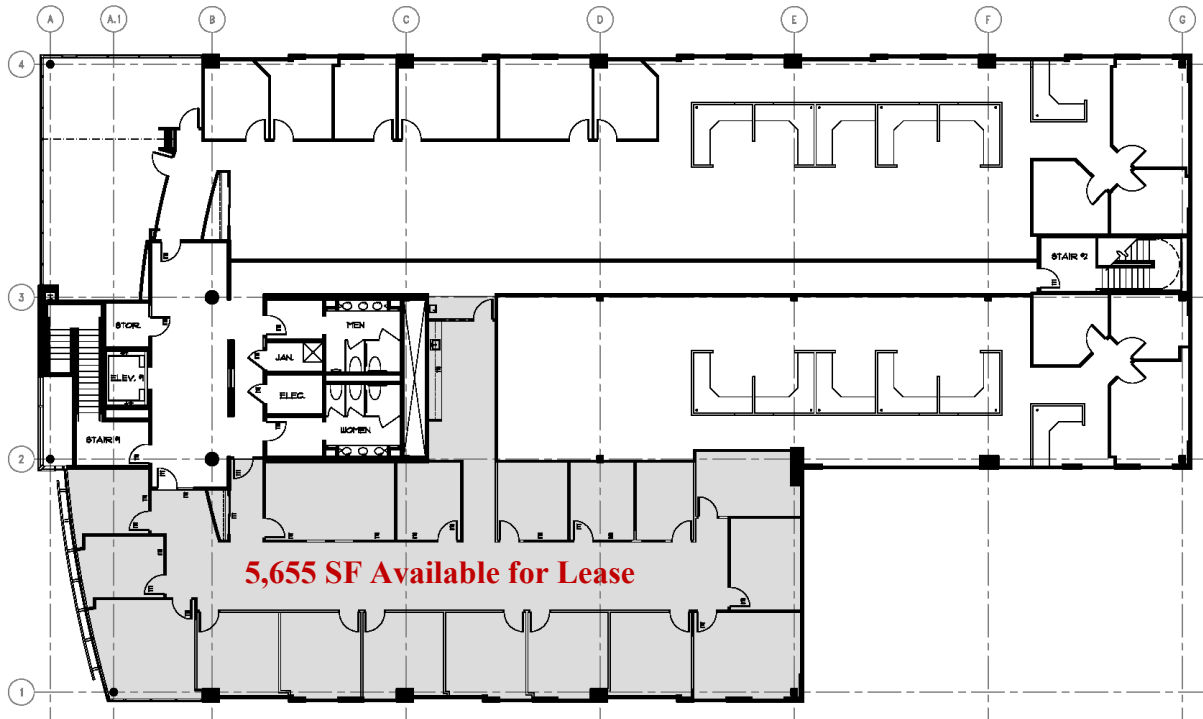
### *Owned by:*



**HAVERFORD  
PROPERTIES**

# 375 E. ELM STREET CONSHOHOCKEN, PA 19428

**5,655 RSF AVAILABLE**  
**2nd FLOOR**



***For Information, Contact:***

**GENE MCHALE**  
[gmchale@beaconcre.com](mailto:gmchale@beaconcre.com)

**COLIN MCHALE**  
[cmchale@beaconcre.com](mailto:cmchale@beaconcre.com)

**610.828.0100**